



What Do You Want and Need in a School?

Use these questions to help you prioritize the characteristics of the college you want to go to and what you want and need in a school.

1 How many students does your ideal college have?

- ☐ Less than 2000 students
- ☐ Between 2000 and 15,000 students
- ☐ More than 15,000 students
- ☐ No preference

2 To what type of environment are you most attracted?

- ☐ Urban
- ☐ Suburban
- ☐ Rural
- ☐ No preference

3 I feel most comfortable around...

- ☐ Hearing peers
- ☐ Peers with hearing loss
- ☐ No difference

4 What is your preferred mode of communication?

- ☐ Verbal/Spoken language
- ☐ American Sign Language
- ☐ Both

5 How comfortable are you in an environment where American Sign Language is the main mode of communication?

- ☐ Very comfortable
- ☐ Somewhat comfortable
- ☐ Not comfortable

6 How important is that the faculty and staff has experience working with students with cochlear implants?

- ☐ Very important
- ☐ Somewhat important
- ☐ Not important

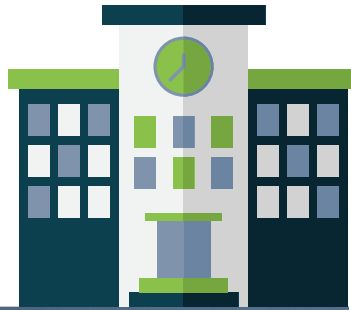
7 Is it important to you that the school has audiology services on campus?

- ☐ Very important
- ☐ Somewhat important
- ☐ Not important

If you answer "Very important" to question 6 and/or 7, you may want to consider a college that has an established program for students with hearing loss. See the list of Schools for the Deaf and Hard of Hearing.



Here are some other things to think about when you're selecting a potential college. Fill out this worksheet as you begin researching potential schools. This information will also be useful to you later when you're selecting the best admissions offer.



What are your strengths and challenges, academically and socially? (e.g. "I am a good writer" or "I am shy and have trouble meeting people")

What are your favorite subjects?

What do you like to do when you are not in class or studying?

What student activities interest you and do you plan to participate in college? (e.g. Greek life, research, sports)

How do you learn best? (e.g. in groups, on my own, through lectures)

Do you want to go to school near home? In-state? Out-of-state? Why?

Is it important to you to go to a prestigious college and, if so, why?

How will you pay for college?

What do you think you would like to do when you graduate from college?

